

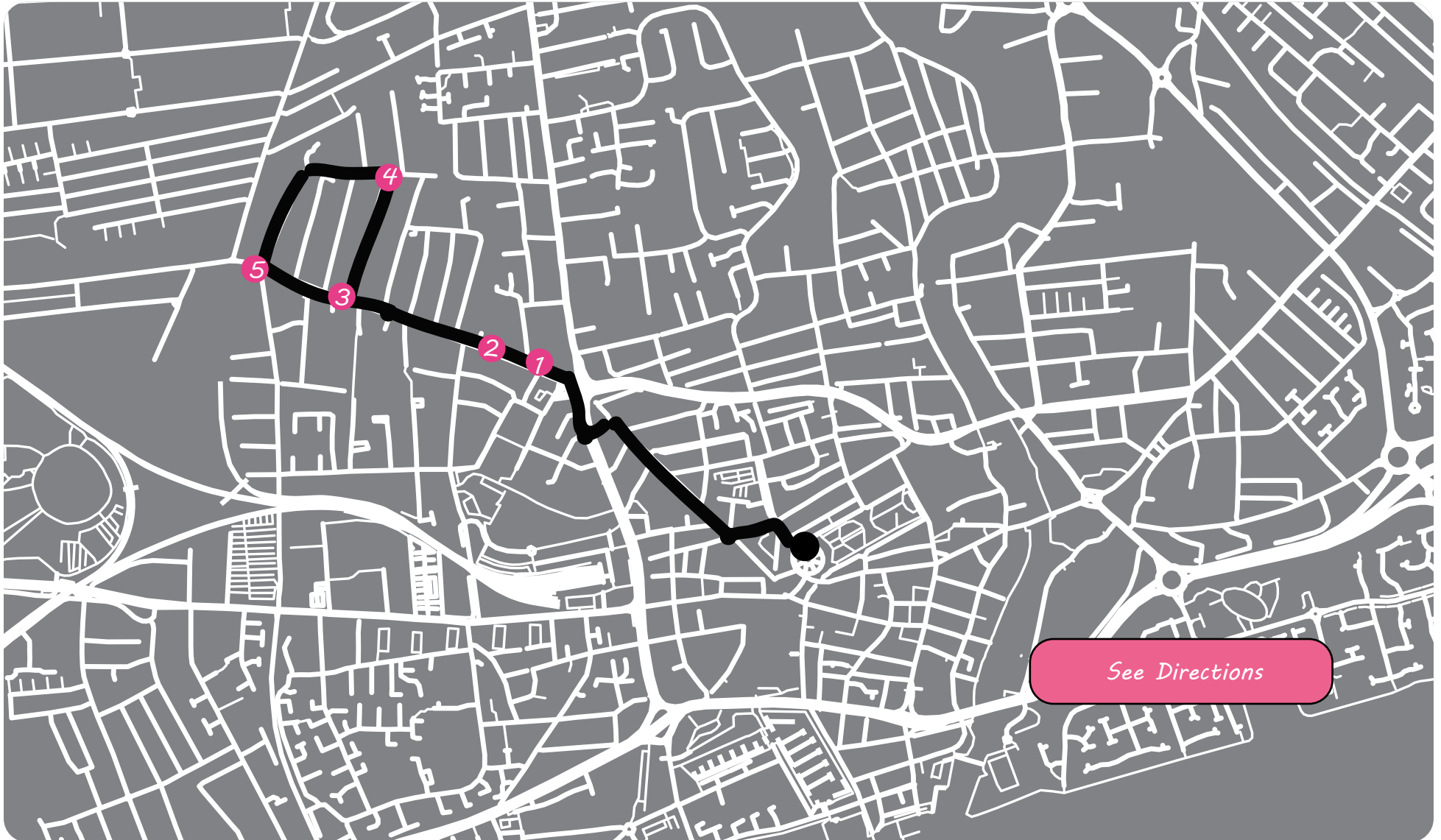
Hullin' it together!

Spring Bank History Walk



Spring Bank History Walk

Click on the markers to learn about your location



1 Our walk starts at The Rose Bowl opposite The Warren. Facing The Warren, turn right down Vernon Street which turns into Bond Street. Turn left onto Jameson Street and right to go down Prospect Street. At the end of Prospect Street cross the main road to your left on to Spring Bank. Walk a little way up Spring Bank and our first point, Spring Bank Tavern is on the left.

2 Continue down Spring Bank. Make sure you keep an eye out for the animal floor tiles.

3 Continue down Spring Bank until you reach Hull Deaf Centre, our next point.

4 Keep going and cross the road at the pedestrian crossing (Spring Bank can be busy) until you reach Albany Street

5 At the end of Albany Street you will find a hippo statue!

6 Turn left onto Cranbourne Street and continue on until you reach Louis Street. Turn left and walk down Louis Street until you emerge onto Spring Bank at our next point, The Polar Bear Pub.

7 To get back to The Warren, walk back up Spring Bank and when you get to Ferensway walk back the way you came at the start of the walk. There is some great artwork and graffiti by local artists. Be sure to look off adjoining streets to see it on the back walls.

[Back to Map](#)

Distance 5.5km

Time taken to walk 1hr 30 mins

Accessibility rating: Easy



Spring Bank Tavern

Formally called The Pineapple, there is no official record of an opening date but it is suspected to be around 1820. It lost its sign in 1829 and would eventually be known simply as the Spring Bank Tavern in 1834. A name that has lasted nearly 200 years.

In the 80's it had the best jukebox in Hull where you could play any song for 10p.

For a little extra, take a quick turn onto Hall Street to see the blue plaque for the Volunteer Fire Brigade. Return to Spring Bank for the rest of the walk.



Back To Map



Hull Deaf Centre

The charity was established over 100 years ago by a group of deaf people who met regularly under a street lamp down High Street in Hull. They used to talk and communicate in their own language.

In 1853, they rented their own property on the High Street, from then the charity grew in size and popularity. In 1920 the newly built Hull and East Yorkshire Institute for The Deaf and Dumb as it was then called was opened.

The Hull Deaf Centre, as it is now known, owns the building outright.



[Back To Map](#)



Albany Street

The top of Albany Street hosts a pair of bears which kicks off a series of animal which commemorate the zoological garden which was lost in the development of Hull.

Established in 1839, Hull Zoological Gardens was the home to many animals, tropical plants and Hull's first roller-coaster. The entrance fee was 1 shilling for adults and 6 pence for children.



Back To Map



Hippo Statue

For a few brief weeks in 1857, Hull Zoological Gardens was home to a White Nile Hippopotamus names Bucheet, which is Arabic for fortunate. Bucheet was the first hippo in England outside of London. The marble statue is a homage to Bucheet and all of the animals from Hull Zoo.



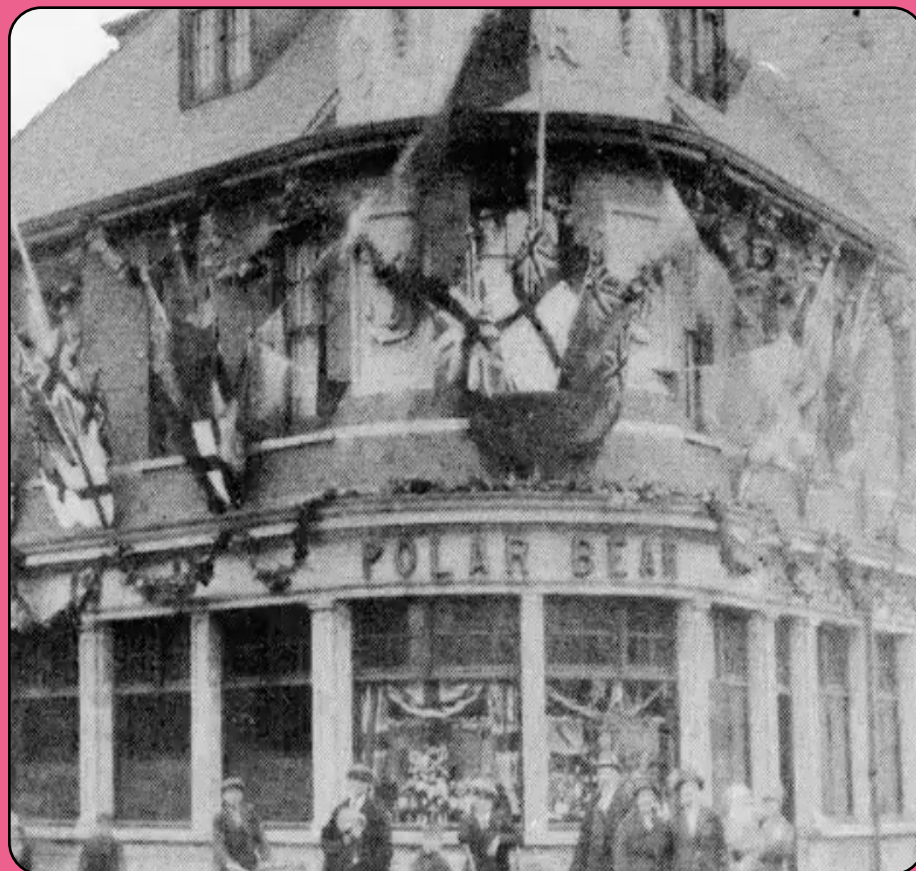
[Back To Map](#)



The Polar Bear Pub

The Polar Bear, one of Hull's premier music venues hosting local and national artists every week. It is home to one of 14 remaining ceramic bar fronts in the UK. First opened in the 1840s further east along Spring Bank, it was moved to its current location in 1860.

In 1861 a purpose-built museum was built to accompany the pub but it burnt down in 1868.



Back To Map

